

Drawing the Collection Lesson 6 – Color



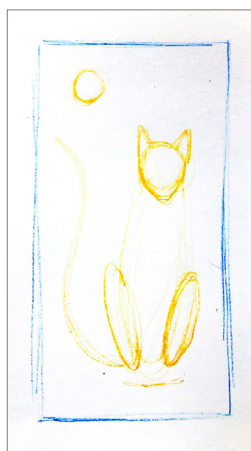
Mary Leyman Cover | A CAT | oil on canvas | 36 x 16 | undated | Gift of the estate of Mary Leyman Cover

For this lesson, we are going to draw while using a little color while looking at an oil painting by Mary Leyman Cover.

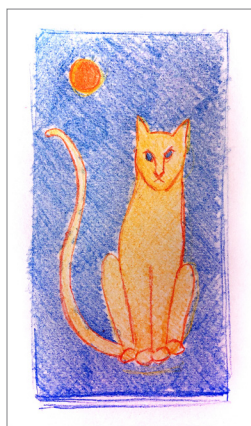
This art piece uses complementary colors for the primary color scheme.

Complementary colors are opposite each other on the color wheel and when placed next to each other, there is an extremely strong contrasting and vibrant effect.

For this sketch we will be using colored pencils in the following colors: yellow, orange, red, medium blue, dark blue, and purple.



The first step will be to sketch our subject using a lighter colored pencil. Remember to begin with the simple shapes.

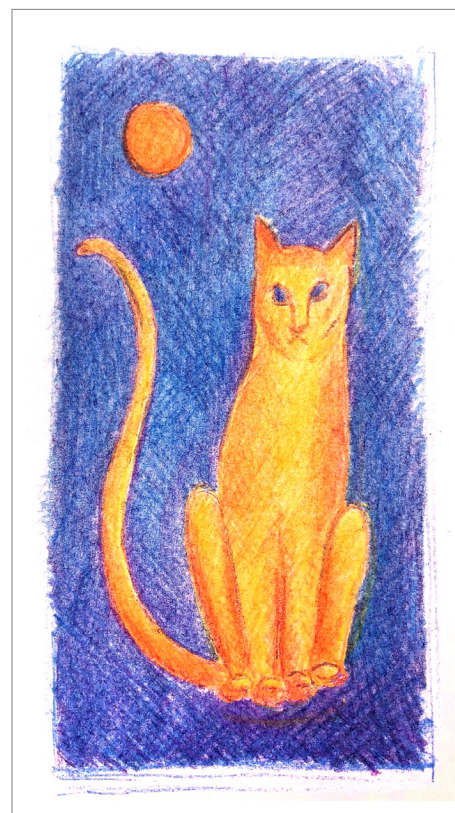


Next, use the orange pencil to draw your edges and the features. Fill in the shape of the cat with yellow and the background with the medium blue.



Add dimension by shading with red on the darker areas of the cat and the purple for the darker areas in the background. This may take a few layers of color. Add yellow over the entire cat to brighten and blend the colors.

Use the dark blue to layer over the background and add some darker lines to the cat's features.



We'd love to see your sketches!
Tag us @smoa_ohio and use #momentsforjoy.



SPRINGFIELD MUSEUM OF ART

A Smithsonian Affiliate

107 Cliff Park Road | Springfield, Ohio 45504 | smoa@springfieldart.net | springfieldart.net | 937.325.4673