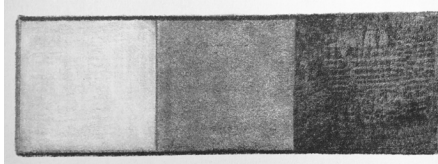


Drawing the Collection

Lesson 2 – Value

Value in art is essentially how light or dark something is on a scale of white to black. To successfully portray the natural world around us, we must be able to simplify values by taking the various colors and shades and reducing them into a very limited amount of values in our drawing. This is a critical skill for the artist to develop.

Try making a simple three-value tonal key with a clear separation between the tones. Draw a tonal key in three values: light, middle, and dark



Now add greater complexity by drawing the full value range of nine tones



Clarence K. Chatterton | PORTRAIT OF A WOMAN | oil on masonite | 20 x 16" | undated | Gift of Mrs. Victoria Cooper

Let's do a value study of the piece at lower left, an oil painting by Clarence K. Chatterton from SMOA's permanent collection...

1. Loosely sketch the simple shapes that make up the painting's composition



2. Outline areas where you see a shift in value. Hint: squinting your eyes will help simplify values



3. Block in the areas of light and dark by referencing your value scale



Try it at home!

Sketch something from around the house or use a photo reference to identify the areas of value change. First simplify into light, middle, and dark tones then expand into more specific values. We'd love to see your sketches! Tag us @smoa_ohio and use #momentsforjoy.



SPRINGFIELD MUSEUM OF ART

A Smithsonian Affiliate

107 Cliff Park Road | Springfield, Ohio 45504 | smoa@springfieldart.net | springfieldart.net | 937.325.4673